

### LOWER LEVEL

#### Living room:

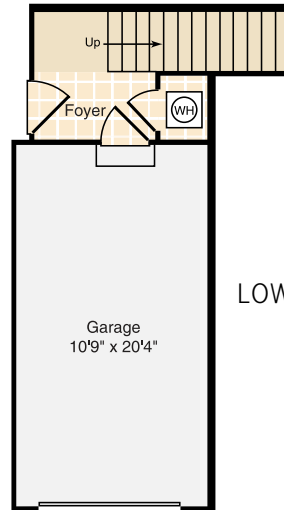
- 18-foot volume ceiling
- Trim includes 3.25" base with 2.25" casings
- Wall-to-wall carpeting
- Interior doors of classic 2-raised-panel design with lever-style hardware from Emtek™ with satin-nickel finish
- Pre-wired for ceiling fan and light

#### Dining room:

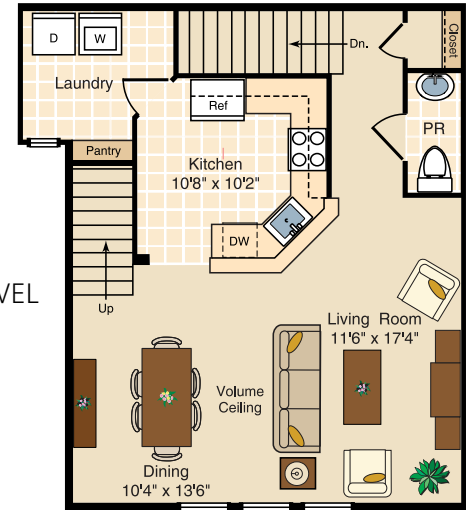
- 18-foot volume ceiling
- Trim includes 3.25" base with 2.25" casings
- Wall-to-wall carpeting
- Interior doors of classic 2-raised-panel design with lever-style hardware from Emtek™ with satin-nickel finish
- Kichler™ designer light fixtures

#### Kitchen:

- Ceramic-tile floor
- Century Kitchen™ cabinetry with an array of door styles and finishes
- Wall cabinets are 42" except where staggered for design purposes
- Granite countertops and backsplashes
- Stainless steel under-mount single-bowl sink
- Moen™ Integra™ faucets with pullout spout
- Whirlpool™ gas range with self-cleaning oven
- Microwave oven
- Whirlpool® Multi-cycle dishwasher
- Whirlpool® 20.9-cubic-foot refrigerator with icemaker
- Kichler™ designer light fixtures
- Pendant lights over island and/or breakfast bar per plan



LOWER LEVEL



- Recessed lighting in balance of kitchen
- Rollout base cabinet shelving and/or concealed trash/recycling bins

#### Powder room:

- Ceramic-tile floor
- Interior doors of classic 2-raised-panel design with lever-style hardware from Emtek™ with satin-nickel finish
- Kichler™ designer light fixtures
- Kohler Sterling® pedestal sink

#### Laundry room:

- Ceramic-tile floor
- Whirlpool® Large-capacity washer and dryer
- Open wire shelving above washer and dryer
- High-efficiency gas hot-water heater

#### Foyer:

- Ceramic-tile floor
- Kichler™ designer light fixtures
- Stained Fiber-Classic® entry doors with crystalline glass, brushed nickel caning and Emtek® satin-nickel finish hardware



UPPER LEVEL

#### Master bedroom:

- Master bedroom walk-in closets with vinyl-coated wire shelving
- Trim includes 3.25" base with 2.25" casings
- Wall-to-wall carpeting
- Pre-wired for ceiling fan and light
- Interior doors of classic 2-raised-panel design with lever-style hardware from Emtek™ with satin-nickel finish

#### Secondary bedroom:

- Trim includes 3.25" base with 2.25" casings
- Wall-to-wall carpeting
- Pre-wired for ceiling fan and light
- Interior doors of classic 2-raised-panel design with lever-style hardware from Emtek™ with satin-nickel finish

#### Master and secondary bathroom:

- Ceramic-tile tub and shower surrounds
- Clear-glass shower doors highlighting the beautiful tile work
- Century Kitchen™ wood vanities and built-in linen closets per plan
- Cultured-marble vanity tops
- Moen™ single-lever brushed-chrome faucets
- Kohler® Sterling™ bisque plumbing fixtures
- Deck-mounted Kohler® whirlpool tubs
- Shower stalls with Corian™ shower seat per plan
- Ventilation fans

#### Loft:

- Wall-to-wall carpeting
- Pre-wired for ceiling fan and light



River Place

AT BUTLER  
SMALL-TOWN LIVING AT ITS BEST